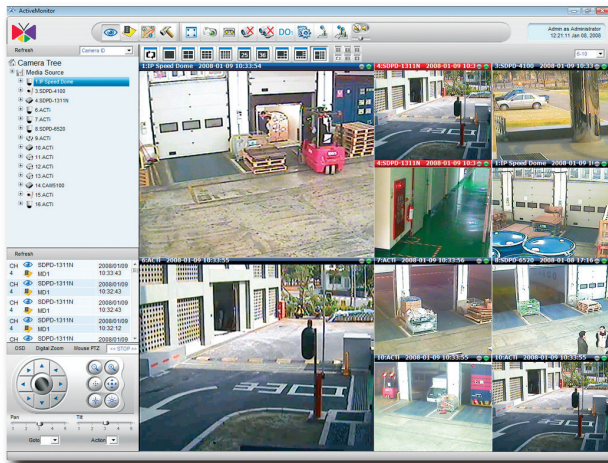


ACTi NVR v2.3

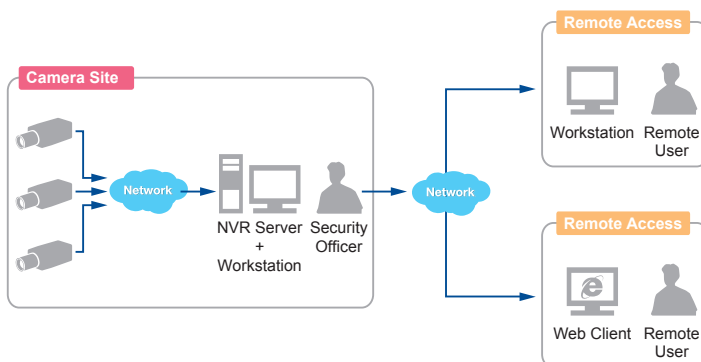
ACTi Network Video Recorder



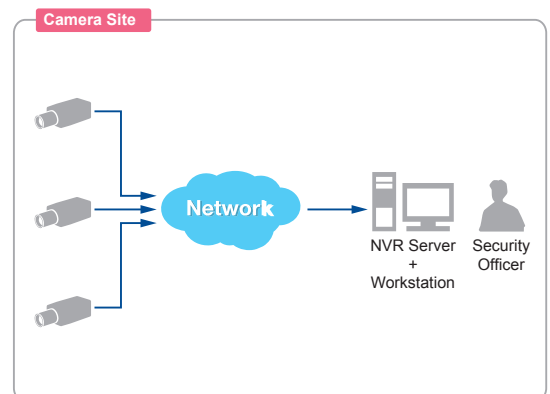
- Manage up to 64 IP cameras or video encoders
- Support H.264/MPEG-4/MJPEG formats up to
- 4-Megapixel resolution
- Live view with 1, 4, 6, 8, 9, 12, 16, 36, 49, 64 window layouts
- PTZ and speed control, preset points and tours, mouse PTZ
- E-maps with camera icons and mini live views
- KCM/TCM/TCD device dual stream management
- Scheduled, event triggered and manual recording
- Time and event based search
- Full screen playback with AVI video export function
- 4-channel synchronized playback
- Event management with motion detection and DI/DO
- Two-way audio, multi-channel audio broadcast
- Unlimited number of remote clients using web browser or PC installable program (Enterprise edition)
- HTTPs protocol between server and client

SOLUTION ARCHITECTURE

NVR Enterprise








NVR Professional



Remote User: Administrator / Supervisor / Manager / Security Officer

BUNDLED UTILITIES

| | | |
|---|--------------------|--|
|  | IP Utility | Search, list and manage devices within local area network, upgrade firmware, backup/restore configuration |
|  | Archive Player | Forward and backward playback of RAW files with 1x-8x speeds together with manual snapshot function |
|  | Media Converter | Convert one or many RAW video clips into a sequence of JPEG snapshots or into AVI video clips and save locally |
|  | Backup Wizard | Backup and restore configuration of ACTi NVR and CMS |
|  | Streaming Explorer | Test device connections, PTZ and event functions via web browser |

ACTi NVR v2.3

PRODUCT SPECIFICATION

| | NVR 2.3 Enterprise | NVR 2.3 Professional |
|--------------------------------|--|--|
| • General | | |
| Full Name | ACTi Network Video Recorder v2.3 Enterprise | ACTi Network Video Recorder v2.3 Professional |
| Maximum Number of Clients | Unlimited | 1 (local) |
| Maximum Number of Cameras | 64 | 64 |
| Free License | 16 channels | 64 channels |
| Compression | H.264, MPEG-4, MJPEG | |
| • Live View | | |
| Display Layout Mode | 1, 4, 6, 8, 9, 12, 16, 36, 49, 64 | |
| Layout Manager | An interface to define display layouts and the pre-set cameras within layouts; full-screen mode available | |
| Layout Tour | Automatic switch between different display layouts | |
| Digital Zoom | Zoom in/out digitally by mouse scroll wheel or by zoom control buttons | |
| Camera Tree | Drag and drop video source from camera tree into display layout | |
| Manual Recording / Snapshot | Instant recording upon mouse click / Instant snapshot upon mouse click or hot key | |
| Event Panel | Display event status upon alarm or upon connection loss or recovery between server and client or when the allocated disk space is full | Display event status upon alarm or when the allocated disk space is full |
| Two-way Audio | Audio sound from and to all the audio supported devices; audio broadcast to multiple devices at the same time | |
| Dual Stream Management | Live view of stream 1 or stream 2 of KCM/TCM/TCD series dual stream devices | |
| • E-map | | |
| Layout | Area maps with camera icons, small live view windows; hyperlinked | |
| Map Switch and Tour | Manual switch and auto tour modes selectable | |
| Setup | E-map image upload; camera positioning; map linking | |
| PTZ Mode | Mouse PTZ mode to control E-map video streams | |
| • PTZ | | |
| Control | Pan, tilt and zoom controls; speed control; both buttons and overlay controls | |
| Preset Points and Tours | Create preset points; create auto tours between preset points | |
| Number of Preset Points | 32 | |
| Joystick | USB based joystick supported | |
| Absolute Position | Supports absolute position function of PTZ and Speed Dome cameras for convenient navigation | |
| Default Protocol | Pelco-P, Pelco-D, Lilin, Dynacolor, Samsung, Kampro, Sony Visca, Panasonic | |
| User Defined Protocol | User defined PTZ or Housing commands | |
| • Recording | | |
| Scheduled Recording | Record video with user defined schedule | |
| Event Recording | Record video when the alarm event is triggered, including the pre-event buffered video clip | |
| Manual Recording | Instant recording upon mouse click | |
| Dual Stream Management | Recording of stream 1 or stream 2 of KCM/TCM/TCD series dual stream devices | |
| • Search & Playback | | |
| Time Based Video Search | Search video recordings by time or channel | |
| Event Based Video Search | Search alarm triggered video recordings | |
| Event Based Snapshot Search | Event triggered snapshots listed as clickable thumbnails for full-size view and export | |
| Activity and Status Log Search | Search for log of video loss/recovery, network disconnect/reconnect, alarm events, user activity; XLS export of all logs | |
| Playback Control | Forward and backward playback with speeds 1x/2x/4x/8x or frame-by-frame; pause; stop | |
| Synchronized Playback | 4 channels | |
| Manual Snapshot | Instant snapshot from playback upon mouse click | |
| Digital Zoom | Zoom in/out digitally by mouse scroll wheel or by zoom control buttons | |
| Video Cropping | Crop a short video clip from long recording file and save it as an independent file | |
| Video Export | Export video clips in AVI format | |
| • Event Management | | |
| Event Trigger | Video motion detection; Passive IR sensor; External device through digital input; Video loss and recovery; Network loss and recovery | |
| Event Response | Record video; Pop-up window with live video; Switch to hotspot window; Play alert audio file or beep; Activate external device through digital output; Upload snapshot to FTP server; Execute system command to activate other programs; E-mail notification with snapshots; Event logging | |
| Manual Event | Manually activate external devices through digital output via live view monitor | |
| • System | | |
| Permission Control | Unlimited number of users, multi-level permission, camera group permission, e-Map permission for different users | |
| Security | HTTPS protocol between NVR server and client program | |
| Language | Multi-language support | |
| • Remote Access | | |
| PC Client Program | User interface program (Workstation) with live view, PTZ, playback, e-map, event management, setup | N/A |
| PC Web Browser | Microsoft Internet Explorer 8.0 or 9.0 with live view, PTZ, playback, e-map, event management, setup | N/A |
| • System Requirements* | | |
| Server PC with Local Client | 1-16 channels: Intel Core 2 Duo 2.66 GHz 32-bit, 4GB RAM 17-64 channels: Intel Core i7-920 2.67 GHz 64-bit, 6GB RAM | |
| Server PC without Local Client | 1-64 channels: Intel Core 2 Duo 2.4 GHz 32-bit, 4GB RAM | N/A |
| Remote Client PC | 1-16 channels: Intel Core 2 Duo 2.66 GHz 32-bit, 4GB RAM 17-64 channels: Intel Core i7-920 2.67 GHz 64-bit, 6GB RAM | N/A |
| Operating System | 32/64 bit: Windows 7 (Professional), Windows Server 2008 (Enterprise, Standard), Windows Vista (Business, Enterprise, Ultimate), Windows Server 2003 SP2, Windows XP Professional SP3 | |
| Browser | Microsoft Internet Explorer 8.0 or 9.0 | |
| Web Server | Microsoft IIS Server | |
| • Integration | | |
| Unified Solution | Fully compatible with ACTi cameras, encoders and CMS v1.1 | Fully compatible with ACTi cameras and encoders |
| ISV CMS Integration | Software Development Kit (SDK) available | N/A |

* These specifications are based on following camera settings:
 Single stream mode: 1280x1024, 3Mbps, 18fps, MPEG-4
 Dual stream mode: 1280x1024, 3Mbps, 18fps, H.264 (recording) and 640x480, Quality:100, 18fps, MJPEG (live view)
 For more details about system requirements, please refer to Project Planner on www.acti.com